

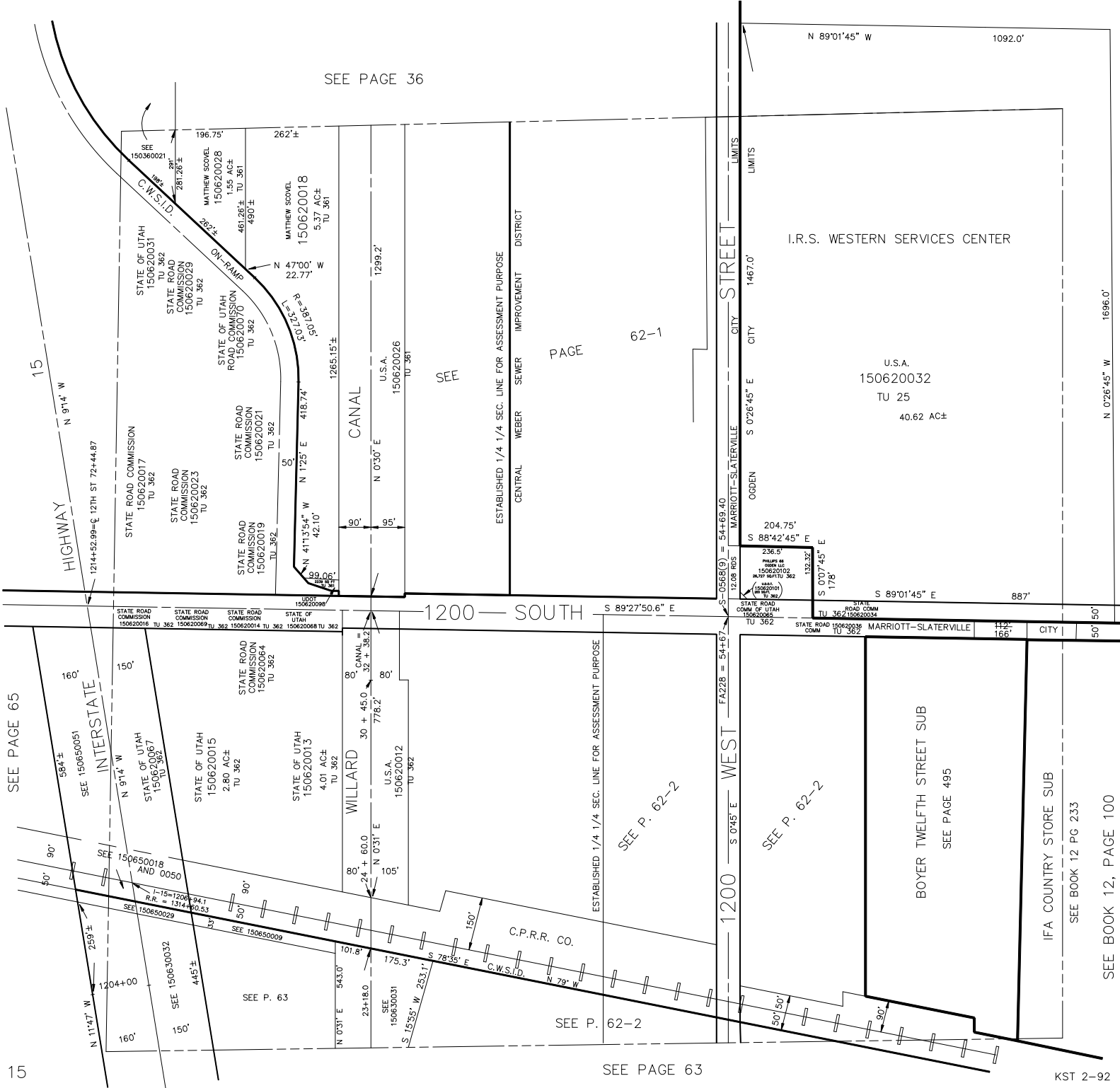
NE 1/4  
SECTION 24, T.6N., R.2W., S.L.B. & M.

IN MARRIOTT-SLATERVILLE CITY, OGDEN CITY & WEBER COUNTY

TAXING UNITS: 25, 361, 362,

SCALE 1" = 200'

SEE PAGE 36



PAGE

62-1

SEE

ESTABLISHED 1/4 1/4 SEC. LINE FOR ASSESSMENT PURPOSE

CENTRAL WEBER DISTRICT

MARRIOTT-SLATERVILLE CITY

OGDEN CITY

I.R.S. WESTERN SERVICES CENTER

U.S.A.  
150620032  
TU 25  
40.62 AC±

1200 SOUTH

1200 WEST

SEE PAGE 65

SEE P. 62-2

SEE P. 62-2

BOYER TWELFTH STREET SUB  
SEE PAGE 495

IFA COUNTRY STORE SUB  
SEE BOOK 12 PG 233

SEE BOOK 12, PAGE 100

15

SEE PAGE 63

KST 2-92